

CLOSER TO GOD

*Religious Architecture
and Sacred Spaces*



gestalten

LOCATION:
Podersdorf, Austria
COMPLETION DATE:
2002

LICHTBLAU WAGNER ARCHITEKTEN PODERSDORF PARISH CENTER

01



01
Interior view. The church space on the north east side—a restrained design.

02
Interior view. The same simple architectural vocabulary was applied to the connective spaces.

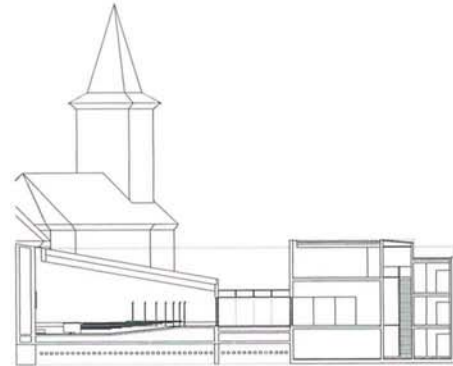
03
Longitudinal section showing the old and the new building.

04 | page 115
Exterior view. The entrance section of the glass wall bearing quotations from the Bible. The emblematic baroque church remains visible.



02

03



A new parish center with a space for religious services and accommodation for ministers was planned in response to growing visitor numbers at the Podersdorf retreat. The new complex consists of two white cubes of different heights connected by a glazed lobby. Set across the width of the site, the block has an urban square on one side and a large festive area on the other. The two areas are connected by a 40 m glass wall, imprinted with quotations from the Bible, which runs along the entire length of the complex on both sides. The interior of the new church opens up towards the altar, with a slightly slanted roof line and a gently sloping floor. A sidelight consisting of narrow slits in the ceiling and wall creates a concentrated atmosphere.

